

# TRENDY TILES

LONDON



POSH WASH

# POSH WASH





floor shown POSH WASH 60x60 BERING GREY



FINE PORCELAIN TILES

RECTIFIED

NATURAL AND LAPPATO FINISH

# TRENDY TILES

## LONDON

POSH WASH  
ARCTIC WHITE



Size 60x60 cm



Size 30x60 cm



Size 10x30 cm

Mosaics on net



Square 5x5 cm



Linear bricks 3x10 cm



Linear bricks 6x30 cm



Random bricks

Arctic White natural finish code: PW-AW-N  
Arctic White lappato finish code: PW-AW-LP

Nominal values. Caliber and shades are intended to be nominal and may have a small variations. Unless high shade variations are part of the designed trendy style.

TRENDY TILES  
LONDON

POSH WASH

ARCTIC WHITE



FINE PORCELAIN TILES  
RECTIFIED  
NATURAL AND LAPPATO FINISH

FINE PORCELAIN TILES

RECTIFIED

NATURAL AND LAPPATO FINISH

# TRENDY TILES

## LONDON

### POSH WASH

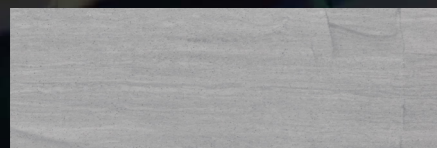
#### LONDON GREY



Size 60x60 cm

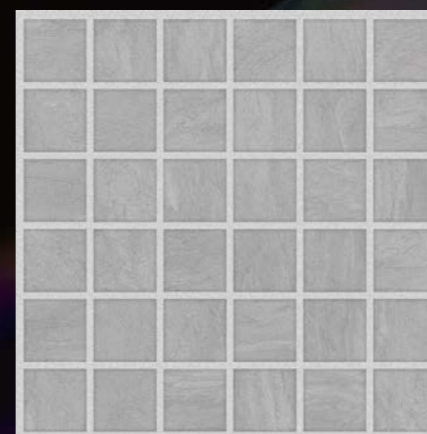


Size 30x60 cm



Size 10x30 cm

Mosaics on net



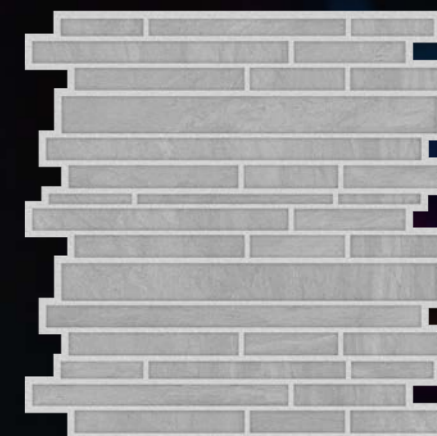
Square 5x5 cm



Linear bricks 3x10 cm



Linear bricks 6x30 cm



Random bricks

London Grey natural finish code: PW-LG-N  
London Grey lappato finish code: PW-LG-LP

Nominal values. Caliber and shades are intended to be nominal and may have a small variations. Unless high shade variations are part of the designed trendy style.

TRENDY TILES  
LONDON

POSH WASH

LONDON GREY



FINE PORCELAIN TILES  
RECTIFIED  
NATURAL AND LAPPATO FINISH



FINE PORCELAIN TILES

RECTIFIED

NATURAL AND LAPPATO FINISH

# TRENDY TILES

## LONDON

POSH WASH  
BERING GREY



Size 60x60 cm



Size 30x60 cm



Size 10x30 cm

Mosaics on net



Square 5x5 cm



Linear bricks 3x10 cm



Linear bricks 6x30 cm



Random bricks

Bering Grey natural finish code: PW-BG-N  
Bering Grey lappato finish code: PW-BG-LP

Nominal values. Caliber and shades are intended to be nominal and may have a small variations. Unless high shade variations are part of the designed trendy style.

TRENDY TILES  
LONDON

POSH WASH

BERING GREY



FINE PORCELAIN TILES  
RECTIFIED  
NATURAL AND LAPPATO FINISH

FINE PORCELAIN TILES

RECTIFIED

NATURAL AND LAPPATO FINISH

# TRENDY TILES

LONDON

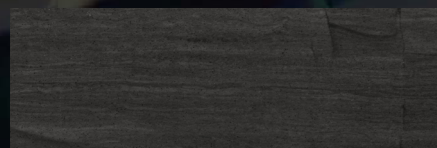
POSH WASH  
BELUGA



Size 60x60 cm



Size 30x60 cm

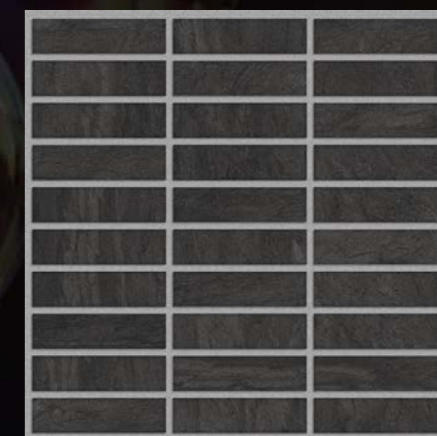


Size 10x30 cm

Mosaics on net



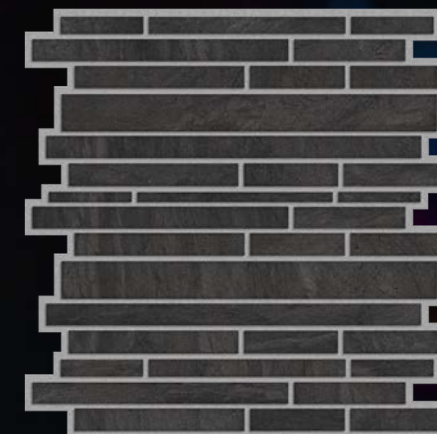
Square 5x5 cm



Linear bricks 3x10 cm



Linear bricks 6x30 cm



Random bricks

Beluga natural finish code: PW-BL-N  
Beluga lappato finish code: PW-BL-LP

Nominal values. Caliber and shades are intended to be nominal and may have a small variations. Unless high shade variations are part of the designed trendy style.

TRENDY TILES  
LONDON

POSH WASH

BELUGA



FINE PORCELAIN TILES  
RECTIFIED  
NATURAL AND LAPPATO FINISH

## Packaging Details

Nominal values

		CM	KG	BOXES	PCS/BOX	MQ/PALLET	KG/BOX
	1 pallet	10x30	900,00	48	30	43,20	18,00
	1 pallet	30x60	1.152,00	48	6	50,40	24,00
	1 pallet	60x60	1.020,00	40	3	43,20	25,50
	1 pallet	30x30 mosaics		48	10		20,00

Although we try to make the colours showed in this catalogue as close to real pieces as possible, they are reproduced as an indication only and they may differ from the real pieces since is impossible to get the same tone colour shade on printed paper.



CITY OF LONDON

## Sizes

NOMINAL VALUES

ESTIMATES EFFECTIVE SIZES

10x30 cm	9,5x29,5 cm
30x60 cm	29,5x59,5 cm
60x60 cm	59,8x59,8 cm
mosaics Square 5x5 cm	4,7x4,7 cm
mosaics Linear bricks 3x10 cm	2,7x9,7 cm
mosaics Linear bricks 6x30 cm	5,95x29,5 cm
mosaics Random	totally randomly produced

## Specifications

Nominal values

TECHNICAL DATA	STANDARD	REQUIREMENT	COLLECTION VALUE
sides	EN ISO 10545-2	± 0,6% max	conforms
thickness	EN ISO 10545-2	± 5,0% max	conforms
straightness of sides	EN ISO 10545-2	± 0,5% max	conforms
rectangularity	EN ISO 10545-2	± 0,6% max	conforms
surface flatness	EN ISO 10545-2	± 0,5% max	conforms
water absorption	EN ISO 10545-3	≤ 0,5%	conforms
bending resistance	EN ISO 10545-5	≥ 35 N/mm <sup>2</sup>	conforms
abrasion resistance	EN ISO 10545-6	≤ 175 mm <sup>3</sup>	conforms
coefficient of linear thermal-expansion	EN ISO 10545-8	available on request	conforms
thermal shock resistance	EN ISO 10545-9	no visible defects	conforms
frost resistance	EN ISO 10545-12	no visible defects or cracks	conforms
chemical resistance	EN ISO 10545-13	no visible changes to surface	conforms
stains resistance	EN ISO 10545-14	no permanent staining	conforms
slip resistance	ASTM	wet +0,62 / dry +0,68	conforms
slip resistance	DCOF BOT 3000	average wet +0,43	conforms



TRENDY TILES LTD

[london@trendytiles.com](mailto:london@trendytiles.com) - [trendytiles.com](http://trendytiles.com)